

Actuator Dimensions

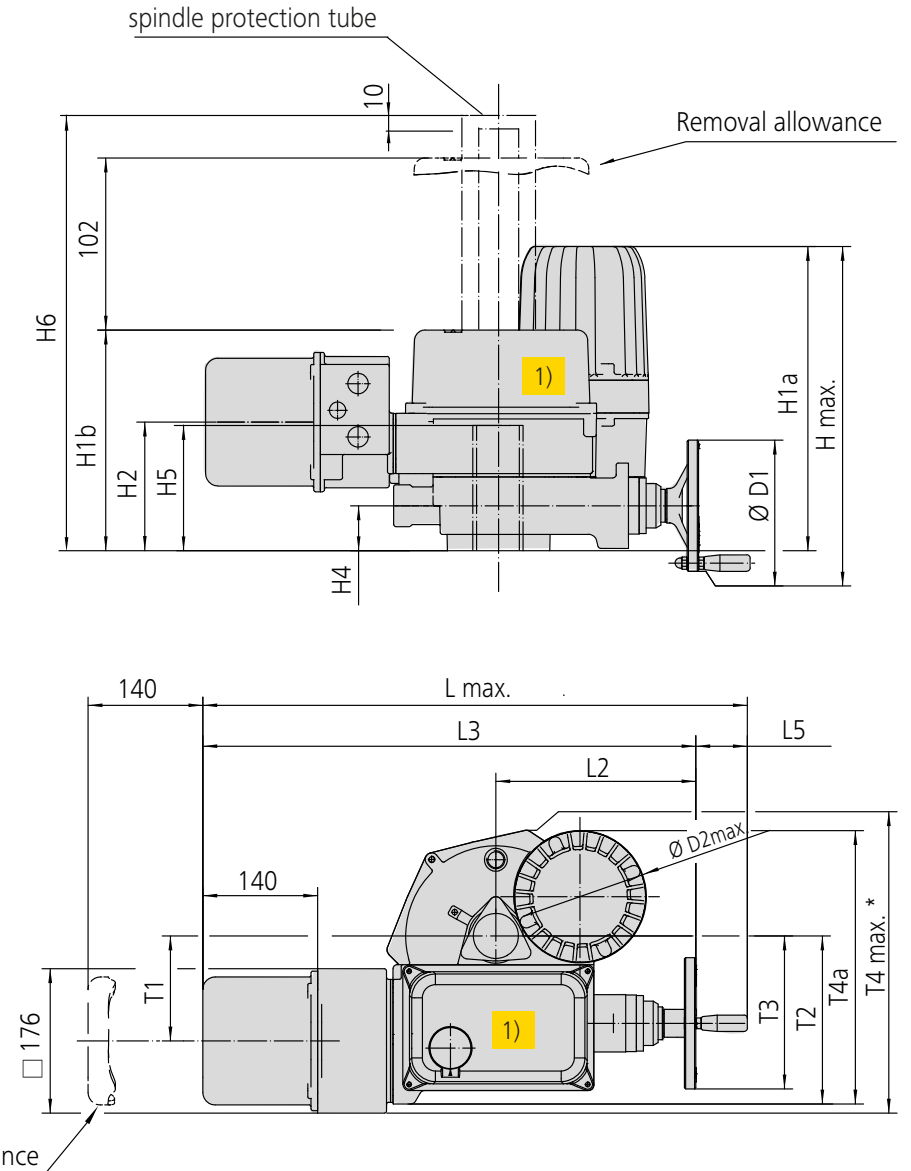
MULTI-TURN ACTUATOR s-range Ex



DREHMO
VALVE ACTUATORS

Actuator Models D Ex, DR Ex	30	59	60	120	249	250	500	1000	2000
Weight [kg]	22	22	32,5	36,5	36,5	63	80	95	
Dimensions [mm]									
L max.	636	636	665	670	670	723	795	795	877
T4 max.	300	300	345	360	360	455	530	580	757
H max.	356	356	397	442	442	570	695	745	881
D1	Ø160	Ø160	Ø160	Ø250	Ø250	Ø250	Ø400	Ø500	Ø500
D2 max.	Ø127	Ø127	Ø160	Ø160	Ø160	Ø245	Ø245	Ø245	Ø245
H1a	325	325	371	371	371	492	542	542	730
H1b	252	252	270	270	270	320	320	320	386
H2	137	137	157	157	157	206	206	206	273
H4	49	49	55	55	55	69	69	69	124
H5	140	140	160	160	160	210	210	210	169
H6	250	250	270	270	270	452	452	452	500
	352	352	372	372	372	702	702	702	-
	452	452	472	472	472	952	952	952	-
	552	552	572	572	572	-	-	-	-
H6	652	652	672	672	672	-	-	-	-
	752	752	772	772	772	-	-	-	-
L2	209	209	244	232	232	264	311	311	348
L3	573	573	602	590	590	644	691	691	772
L5	63	63	63	80	80	80	105	105	105
T1	104	104	128	128	128	129	129	129	203
T2	179	179	205	205	205	214	214	214	294
T3	178	178	187	232	232	260	335	385	450
T4a	287	287	334	334	334	412	412	412	600
cover size 1)	233 x 153 x 102 (L x T x H)					245 x 170 x 102 (L x T x H)			

1) Limit switch compartment housing cover



* Depending on the device, the outer dimension is either defined by handwheel or housing.

Output drive forms

PART-TURN ACTUATOR s-range Ex

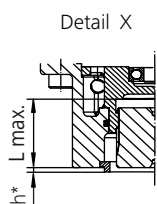
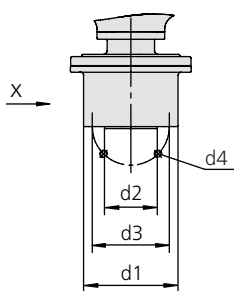
DREHMO
VALVE ACTUATORS

Actuator DPR) Ex	75/150/299			300/450		600/900		1200/1800	
Size DIN EN ISO 5211	F05	F07	F10	F10	F12	F12	F14	F14	F16
Dimensions [mm]									
d1	90	90	125	125	150	150	175	175	210
d2 ¹⁸	35	55	70	70	85	85	100	100	130
d3	50	70	102	102	125	125	140	140	165
d4	M6	M8	M10	M10	M12	M12	M16	M16	M20
d5	16			16		22		22	
d6	11			11		14		18	
h*	2.5			2.5		2.5		2.5	
h1	12			12		16		16	
h2	110			130		170		180	
threath depth d4	12	15	16	18	19	22	25	29	32
Lmax	40		66	50	82	61	102	75	127
l6	10			10		16		19	
l7	40			40		45		45	
l8	20			20		26		26	
l9	80			80		90		100	
l10	40			40		45		50	
l11	25			25		30		35	
l12	120			120		135		150	
l13	80			80		110		110	
l14	150			150		190		225	
r1	150			150		150		150	
r2	200			200		200		200	
r3	-			-		250		250	
r4	218			218		273		273	

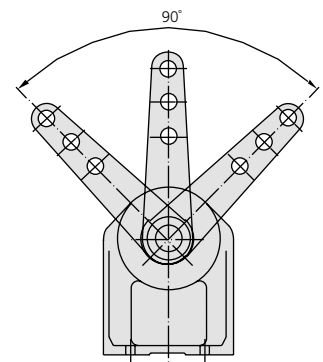
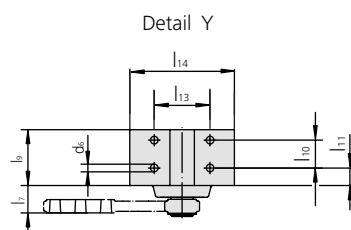
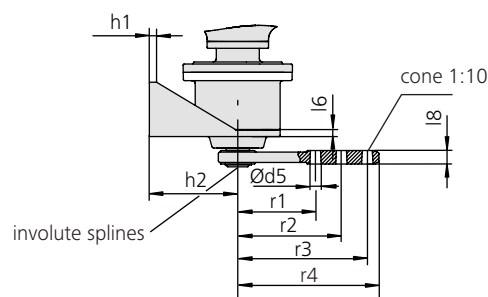
Length unit: mm

* Allowance for spigot is not available as standard. The spigot ring is a separate component, available as option.

DIRECT MOUNTING



FOOT AND LEVER

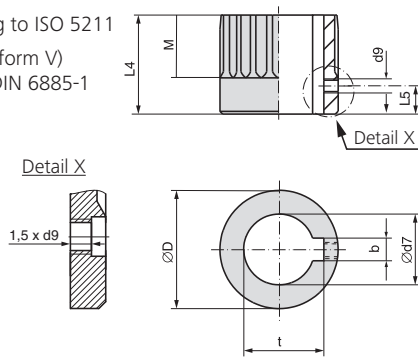


Output drive forms

PART-TURN ACTUATOR s-range Ex

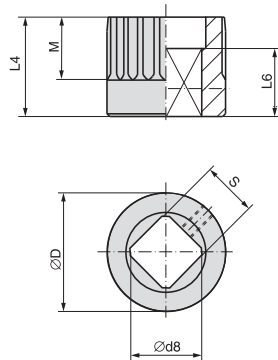
DREHMO
VALVE ACTUATORS

Bore according to ISO 5211
With keyway (form V)
according to DIN 6885-1



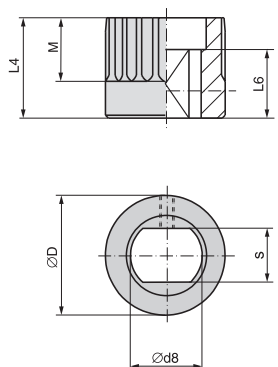
Dimensions	DP(R) Ex 75/150		DP(R) Ex 299		DP(R) Ex 300/450		DP(R) Ex 600/900		DP(R) Ex 1200/1800	
ISO 5211	F05	F07	F07	F10	F10	F12	F12	F14	F14	F16
Ø D	41.75		41.75		51.75		67.6		81.6	
b JS9 ¹⁾	6		6		8		10		14	
Ø d7 H8 ²⁾	18		22		28		36		48	
Ø d7 max.	28		28		38		50		60	
d9 ³⁾	M5		M5		M6		M6		M6	
L4	35		35		45	75	55	95	65	115
L5 ³⁾	8		8		10		10		10	
M	20		20		30		40		47	40
t ¹⁾	20.8		24.8		31.3		39.3		51.8	

Innenvierkant (Form L/D)
nach ISO 5211



Dimensions	DP(R) Ex 75/150		DP(R) Ex 299		DP(R) Ex 300/450		DP(R) Ex 600/900		DP(R) Ex 1200/1800	
ISO 5211	F05	F07	F07	F10	F10	F12	F12	F14	F14	F16
Ø D	41.75		41.75		51.75		67.6		81.6	
Ø d8 min. ²⁾	18.1		22.2		28.2		36.2		48.2	
Ø d8 max.	28.2		28.2		40.2 ⁴⁾		48.2		60.2	
L4	35		35	60	45	75	55	95	65	115
L6 min.	30		30		30		30		40	
M	20		20		30		40		47	40
s H11 ²⁾	14		17		22		27		36	
s H11 max.	22		22		30 ⁴⁾		36		46	

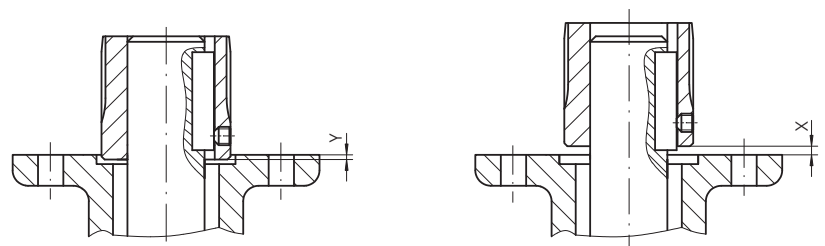
Square bore (form L/D)
according to ISO 5211



Dimensions	DP(R) Ex 75/150		DP(R) Ex 299		DP(R) Ex 300/450		DP(R) Ex 600/900		DP(R) Ex 1200/1800	
ISO 5211	F05	F07	F07	F10	F10	F12	F12	F14	F14	F16
Ø D	41.75		41.75		51.75		67.6		81.6	
Ø d8 min. ²⁾	18.1		22.2		28.2		36.2		48.2	
Ø d8 max.	28.2		28.2		36.2		48.2 (48 ⁵⁾)		60.2	
L4	35		35	60	45	75	55	95	65	115
L6 min.	25		25		25		30		40	
M	20		20		30		40		47	40
s H11 ²⁾	14		17		22		27		36	
s H11 max.	22		22		27		36 (41 ⁵⁾)		46	

Mounting position of coupling

X max.	3	4	5	8
Y max.	2	5	10	10



- 1) Dimensions depend on Ø d7, refer to DIN 6885-1
- 2) Recommended size according to ISO 5211
- 3) Thread with grub screw
- 4) According to DIN 79
- 5) According to DIN 475