

# Actuator Dimensions

MULTI-TURN ACTUATOR i-matic

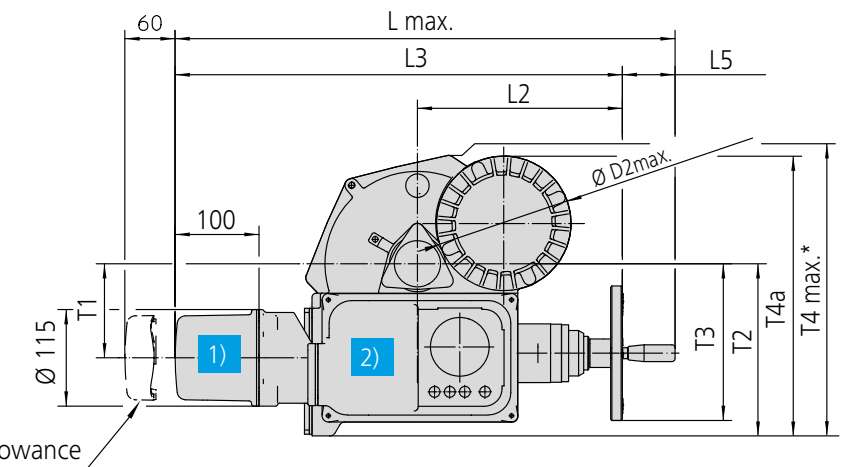
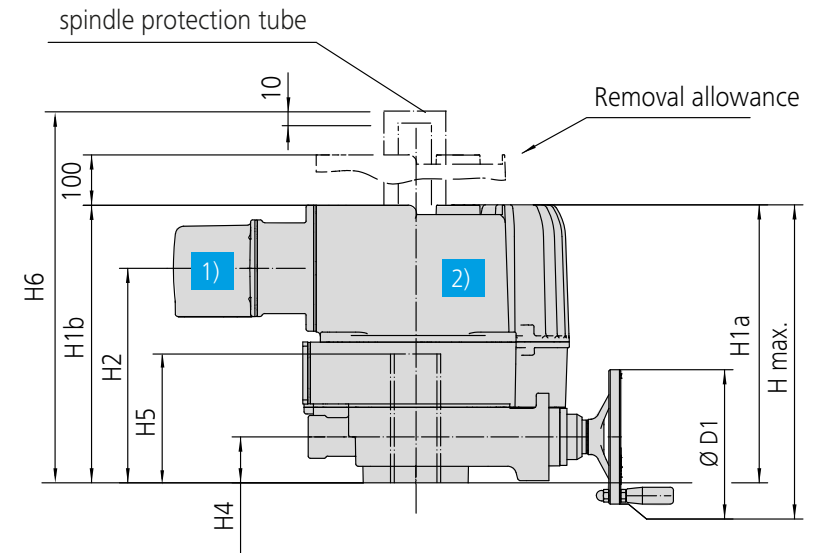


**DREHMO**  
VALVE ACTUATORS

Actuator Models DiM, DiMR	30	59	60	120	249	250	500	1000	2000	
Weight [kg]	23	25	33,5	33,5	33,5	69,5	80,5	90,5	190	
Dimensions [mm]										
L max.	561	561	596	601	601	661	732	732	811	
T4 max.	287	287	334	360	360	455	530	580	757	
H max.	344	344	357	402	402	570	695	745	934	
D1	Ø160	Ø160	Ø160	Ø250	Ø250	Ø250	Ø400	Ø500	Ø500	
D2 max.	Ø127	Ø127	Ø160	Ø160	Ø160	Ø245	Ø245	Ø245	Ø245	
H1a	280	280	331	331	331	492	542	542	730	
H1b	313	313	331	331	331	404	404	404	471	
H2	238	238	256	256	256	306	306	306	373	
H4	49	49	55	55	55	69	69	69	125	
H5	140	140	160	160	160	210	210	210	169	
H6	250	250	270	270	270	452	452	452	500	
	352	352	372	372	372	702	702	702	-	
	452	452	472	472	472	952	952	952	-	
	552	552	572	572	572	-	-	-	-	
652	652	672	672	672	-	-	-	-		
L2	209	209	244	232	232	264	311	311	348	
L3	499	499	533	521	521	581	628	628	706	
L5	63	63	63	80	80	80	105	105	105	
T1	102	102	112	112	112	128	128	128	205	
T2	179	179	205	205	205	214	214	214	294	
T3	178	178	187	232	232	260	335	385	450	
T4a	287	287	334	334	334	412	412	412	601	
IM-unit	2)	408 x 153 x 163 (L x T x H)					420 x 170 x 185 (L x T x H)			

1) Electrical connection size "S" as standard. Options available, refer to page 3.

2) Electronic unit (IM-unit) coversize including cover for electrical connection.



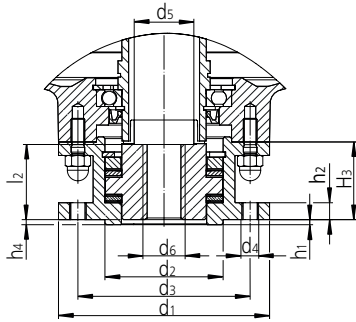
\* Depending on the device, the outer dimension is either defined by handwheel or housing.

# Connection Dimensions

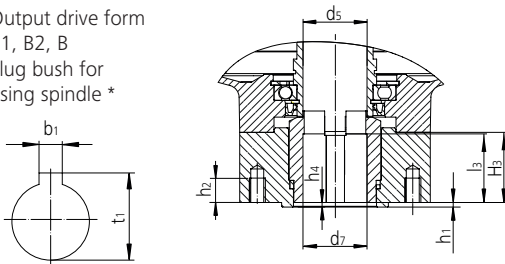
MULTI-TURN ACTUATOR i-matic

**DREHMO**  
VALVE ACTUATORS

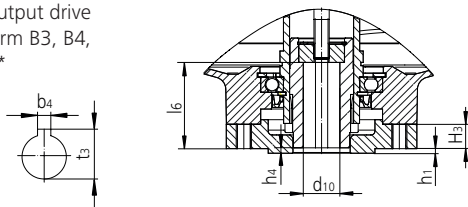
Output drive form  
A Stem nut for  
rising spindle



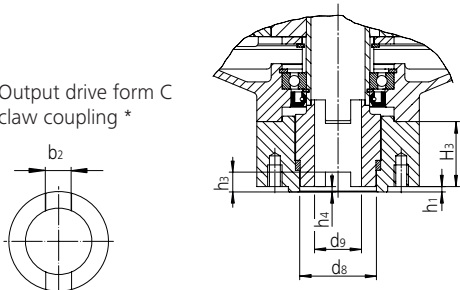
Output drive form  
B1, B2, B  
Plug bush for  
rising spindle \*



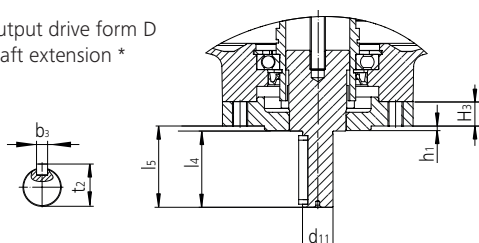
Output drive  
form B3, B4,  
E \*



Output drive form C  
claw coupling \*



Output drive form D  
shaft extension \*



Actuator DiM	30	59	60 120	249	250 500	1000	2000	
Actuator DiMR	30	59	60 120		250 500	1000		
size	DIN EN ISO 5210	F07	F10	F10	F14	F14	F16	F25
	DIN 3210	-	G0	G0	G1/2	G1/2	G3	-
Dimensions [mm]								
d1	FORM A	90	125	125	175	175	210	350
d <sub>2,18</sub>	DIN EN ISO 5210	55	70	70	100	100	130	200
	DIN 3210	-	60	60	100	100	130	-
d <sub>3</sub>		70	102	102	140	140	165	254
d <sub>4</sub>	4 x	M8	M10	M10	M16	M16	M20	8 x M16
d <sub>5</sub>		26	30	40.5	40.5	52.5	65.5	85
d <sub>6,max</sub>		24	28	40	40	52	65	85
h <sub>1</sub> = h <sub>4</sub>		3	3	3	4	4	5	5
h <sub>2</sub>		12	16	16	22	23	35	24
H <sub>3</sub>		36	42	46	58	56	70	130
l <sub>2</sub>		34	41	40	54	54	68.5	130

b <sub>1</sub> <sup>HP</sup>	FORM B1, B	8	12	12	18	18	22	28
d <sub>5</sub>		26	30	40.5	40.5	52.5	65.5	85
d <sub>7</sub> <sup>HP</sup>	B1, B	28	42	42	60	60	80	100
d <sub>7,max</sub>	B2, B	28	42	42	60	65	80	100
H <sub>3</sub>		36	46	46	70	66	81	130
h <sub>1</sub> = h <sub>4</sub>		3	3	3	4	4	5	5
t <sub>1</sub>	FORM B1, B	31.3	45.3	45.3	64.4	64.4	85.5	106.4

\* missing dimensions see form A

b <sub>4</sub> <sup>HP</sup>	FORM B3, E	5	6	6	8	8	12	14
d <sub>10</sub> <sup>HP</sup>	B3, E	16	20	20	30	30	40	50
d <sub>10,max</sub>	B4, E	16	20	30	30	40	50	50
H <sub>3</sub>		18	17	16	22	23	28	30
h <sub>1</sub> = h <sub>4</sub>		3	3	3	4	4	5	5
l <sub>6</sub>		41	56	56	79	79	98	118
t <sub>3</sub>	FORM B3, E	18.3	22.8	22.8	33.3	33.3	43.3	53.8

\* missing dimensions see form A

b <sub>2</sub> <sup>HP</sup>	FORM C	14	14	14	20	20	24	30
d <sub>9</sub>		42	54	54	80	85	110	139.9
d <sub>9</sub>		26	28	28	38	38	47	85
H <sub>3</sub>		36	46	46	70	66	81	130
h <sub>1</sub> = h <sub>4</sub>		3	3	3	4	4	5	5
h <sub>3</sub>		11	11	11	14	14	17	16

\* missing dimensions see form A

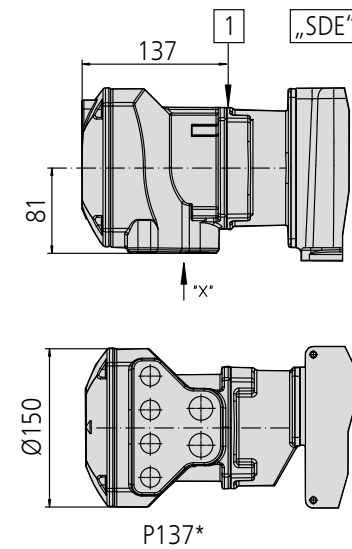
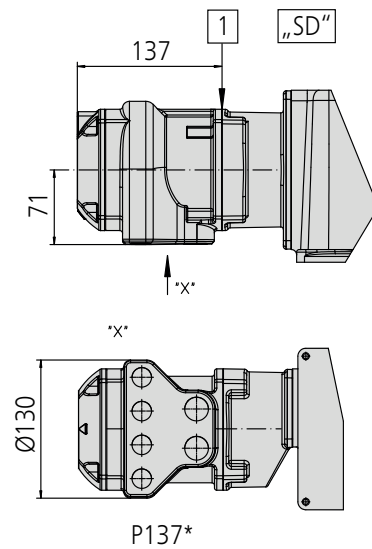
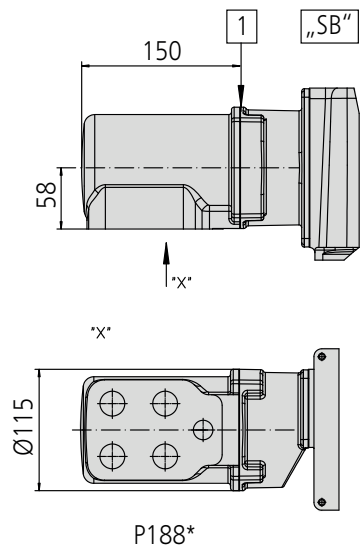
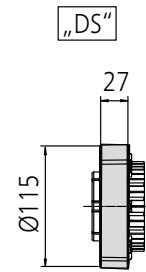
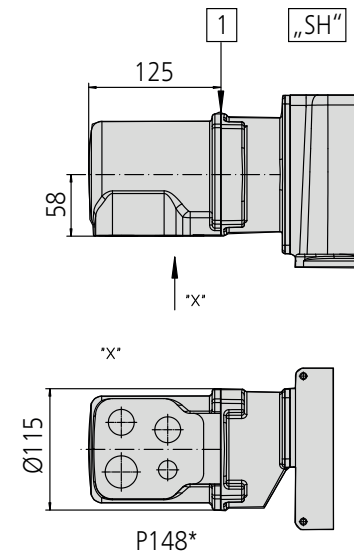
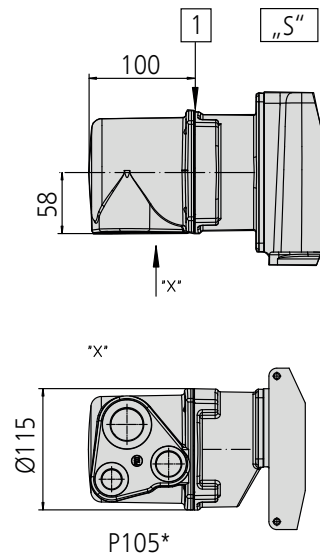
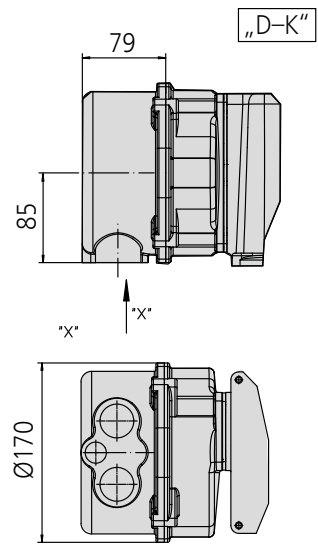
b <sub>3</sub> <sup>HP</sup>	FORM D	5	6	6	8	8	12	-
d <sub>11</sub>		16	20	20	30	30	40	-
H <sub>3</sub>		18	17	16	22	23	28	30
h <sub>1</sub>		3	3	3	4	4	5	5
l <sub>4</sub>		40	50	50	70	70	90	-
l <sub>5</sub>		45	55	55	76	76	96	-
t <sub>2</sub>		18	22.5	22.5	33	33	43	-

\* missing dimensions see form A

# Dimensions electrical connections

MULTI-TURN ACTUATOR i-matic

**DREHMO**  
VALVE ACTUATORS



1 Option Double Sealed „DS“

\* Thread combination code  
Alternative thread combinations  
available as option